

Point-to-Point Backhaul Radio Surveillance Backhaul Made Easy

Incredible performance

Narrow Beam width 5MHz/ 10MHz



WIS-L515N is a 300Mbps 2*2MIMO Hi-Power outdoor wireless bridge based on 802.11a/n technology. Featuring the revolutionary TDMA Intelligent Dynamic Polling Protocol technology, WIS-L515N is fully compatible with WIS base station and bridge thus greatly improving the networks calability in throughput and latency.WIS-L515N is best applied to rural wireless Internet,wireless backhaul and other industrial wireless surveillance solutions.

WIS new WIS-L515N 170+ Mbps throughput - a result of powerful hardware platform with 802.11ac technology based radio .Incorporating a Qualcomm radio and 64 MBytes of RAM and 16MBytes of flash memory the, WIS-L515N series devices are an ideal solution for capacity demanding applications.

The robust hardware is coupled with a 15 dBi directional panel antenna; ideal for short to medium range applications. The WIS Central management software system that facilitates network installation, configuration, control, maintenance, monitoring, and expansion.

Features

- Built in 15dBi dual polarization directional antenna, up to 7km.
- Support non-standard frequency points, spread spectrum to 4.9-6.1GHz.
- Supports 5 and 10MHz narrowband operating bandwidth.
- TDMA Intelligent Dynamic Polling Protocol.
- Support for ATPC power control.
- Support VLAN.
- Support IPv6



WIS-L515N is a high-performance, high-speed outdoor long-distance wireless bridge with characteristics such as long transmission distance, strong penetration ability, and strong anti-interference ability. just called as zero interference Product.



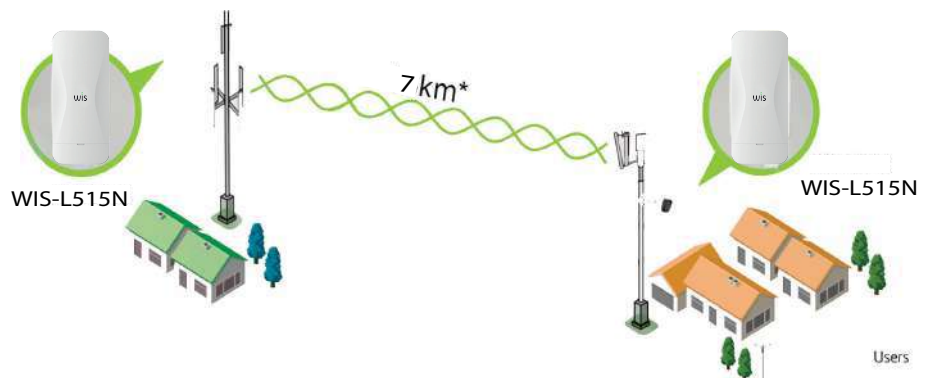
Point to Point solution

Full Feature & Performance

- Full Wis OS Support
- Auto-Distance Adjust
- 7km+Availability
- Fully Managed by WIS Centrally Software

Wireless Solutions for Surveillance

- Cost-effective passive PoE
- IP66 Waterproof
- Multiple mounting methods
- Extremely Amazing Performance



15 dBi Directional
2X2 MIMO Antenna



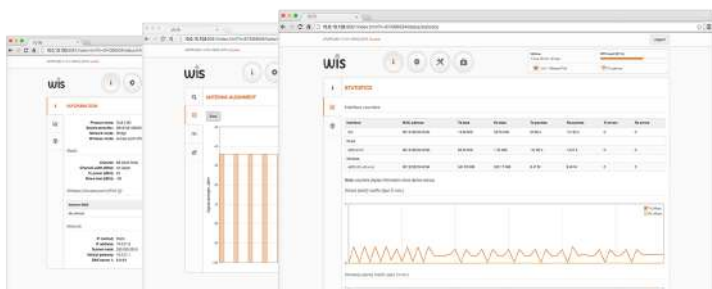
15 kV ESD & 6kV
Lightning Protection



Narrow Beam
5MHz/10MHz



Centralized
Management



Powerfull OS

The Wis OS is a highly functional and easy to use operating system embedded in all Wis hardware devices for effortless setup and trouble free operation. High performance (170 Mbps) allows offering more bandwidth together with additional services such as VoIP and IPTV. This is possible when using Wis's smart QoS mechanism and multicast traffic enhancements for triple play services. Such services are essential for all next generation service providers to complement their existing portfolios. WIS's proprietary transmission protocol, ensures smooth performance with a high number of clients even in noisy environments.



Specifications

Distance Recommendation	PTMP Mode	PTP Mode
WIS-L515N	3km/ 1.86mi	7km/ 4.34 mi

Wireless

WLAN standard	IEEE 802.11 a/n
Radio mode	MIMO 2x2
Radio frequency band	5.150GHz~5.850GHz (Debug mode: 4.9~6.1GHz)
Transmit power	Up to 29 dBm (country dependent)
Channel size	5,10, 20, 40 MHz
Data rates	802.11 n: 300, 270, 240, 180, 120, 90, 60, 30 Mbps 802.11 a: 54, 48, 36, 24, 18, 12, 9, 6 Mbps

5G TX Power	802.11a	54M	24±2dBm	6M	27±2dBm
	802.11n HT20	MCS7	23±2dBm	MCS0	26±2dBm
	802.11n HT40	MCS7	22±2dBm	MCS0	25±2dBm
5G Receiving Sensitivity	802.11a	54	-72dBm	6M	-92dBm
	802.11n HT20	MCS7	-70dBm	MCS0	-89dBm
	802.11n HT40	MCS7	-68dBm	MCS0	-87dBm

5G EVM	802.11a_54M: ≤-25 dB ; 802.11n_MCS7: ≤-28 dB ;
ppm	±20ppm
WAN	1*10/100M WAN, support 24V POE power
Reset	Press 10 seconds for factory resetting.

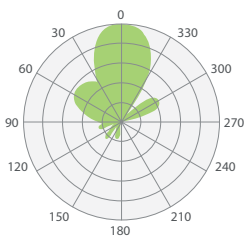
Management

Working mode	Access Point (Automatic WDS), Access Point (TDMA3), Site (WDS/TDMA3), Site (ARPNAT)
Wireless	Intelligent dynamic polling, automatic channel selection, automatic modulation mode selection, automatic transmission power control (ATPC)
Wireless Safety	WPA/WPA2 personal encryption, WPA/WPA2 enterprise encryption, WACL, user isolation
Wireless QoS	TDMA implements 4 queue priority
Network mode	IPv4 IPv6
VLAN	Support VLAN and VLAN transparent transmission
WAN protocol	Static IP, DHCP client
Service	DHCP service, SNMP service, NTP client, route tracking, ping watchdog
Management	HTTP(S) GUI, SSH, SNMP read, WNMS, Telnet
Built Tool	Site survey, connection testing, antenna calibration

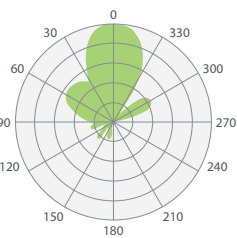


Antenna	
Type	Dual polarized flat directional antenna
Gain	15dBi
Wired Interface	10/100 Base-T, RJ45
Power	
Power Supply	12 - 24 VDC passive PoE (24 V passive PoE adapter is included in the package)
Power Source	100 – 240VAC
Max Power Consumption	4.5 W
Indicators	
Temperature	Working: -40°C to 70°C; Storage: -40°C to 70°C ; Humidity: 5%~95%(Non-Condensing)
IP Grade	IP66
ESD	15 kV
Lightning Protection	6 kV
Physical	
Dimension	158mm*97mm*38mm
Weight	0.18kg
Mounting	Combination wall / pole mount with quick swap bracket included
Warranty	3 years
Regulatory Certification	
CE/ROHS	

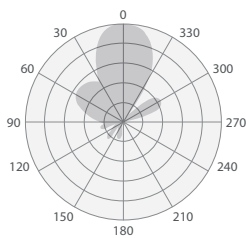
Antenna specification



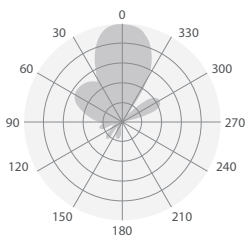
Horizontal beam angle



Vertical beam angle



Horizontal beam angle



Vertical beam angle

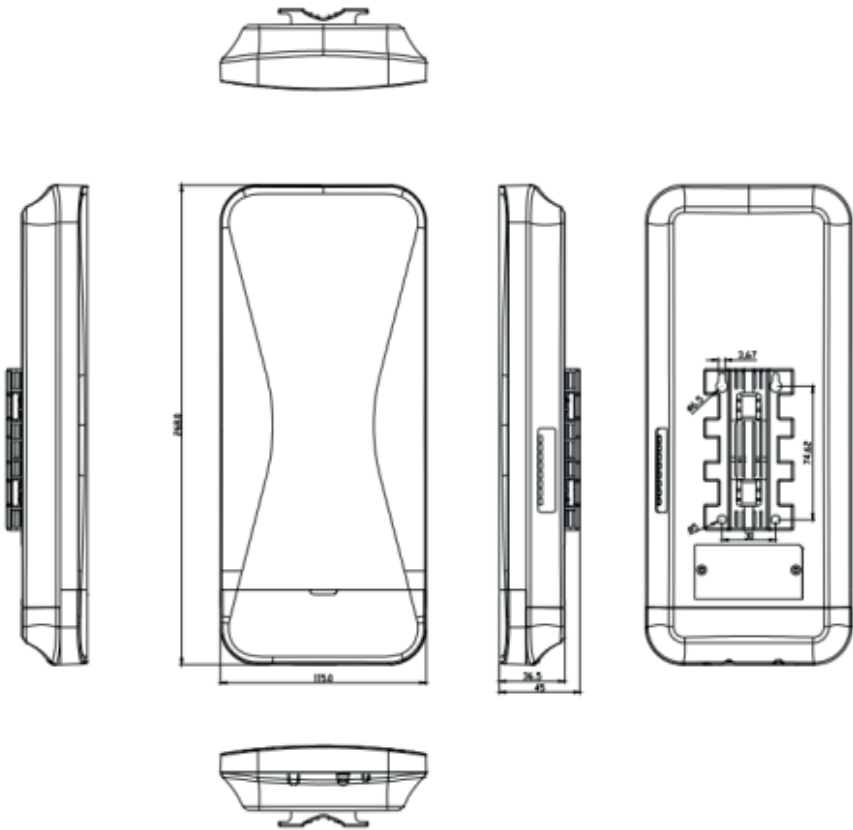
Frequency Range	4.9 - 6.1GHz
Gain	15dBi
Polarization	Dual Linear
Polarization mode	Vertical/horizontal dual polarization
Azimuth Beamwidth (H pol)	33 deg
Azimuth Beamwidth (V pol)	33 deg



Packing List

CPE	1
Mounting kit	1
PoE adapter	1
User manual	1

Dimension



ORDERING INFORMATION

WIS-L515N

5GHz Outdoor Long distance Bridge



*Product specifications and availability are subject to change without notice

